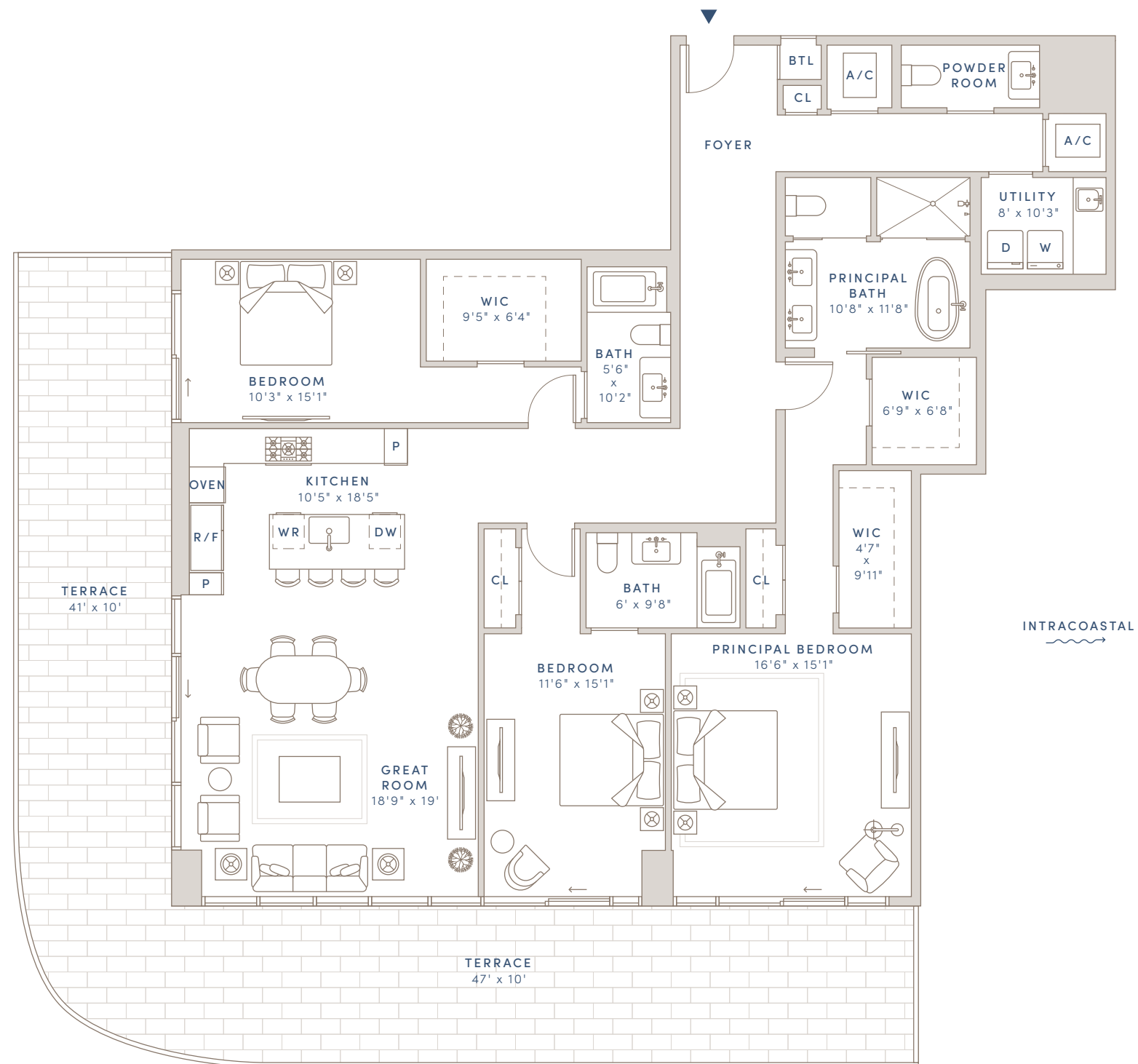


# RESIDENCE I

## FLOORS 7-18

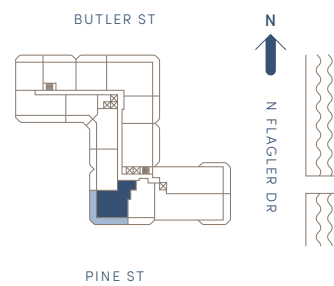
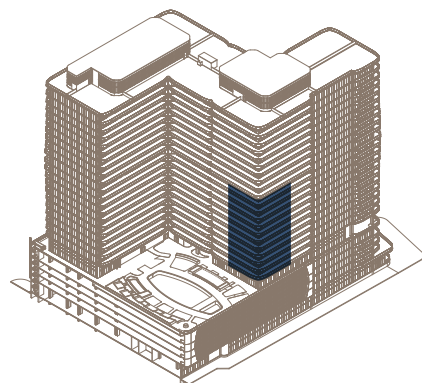
3 BEDROOMS  
3 BATHS  
1 POWDER ROOM

INTERIOR: 2,358 SQ FT  
EXTERIOR: 922 SQ FT  
TOTAL: 3,280 SQ FT



# OLARA

WHERE LIFE FLOWS



DEVELOPER  
SAVANNA

ARCHITECT  
ARQUITECTONICA

INTERIOR DESIGN  
GABELLINI SHEPPARD

LANDSCAPE ARCHITECT  
EDSA

CONSTRUCTION TEAM  
SAVCON AND GILBANE

EXCLUSIVE SALES AND MARKETING  
COMPASS DEVELOPMENT  
MARKETING GROUP

Sales Gallery at 300 Butler Street, West Palm Beach, FL 33407

1919 N Flagler Drive · West Palm Beach, FL 33407 · 561-448-3015 · OlaraWestPalmBeach.com

Floorplans and dimensions are approximate, may vary, and are subject to change without notice. Floorplans are conceptual and not to scale. ORAL REPRESENTATIONS CANNOT BE RELIED UPON AS CORRECTLY STATING THE REPRESENTATIONS OF THE DEVELOPER. FOR CORRECT REPRESENTATIONS, MAKE REFERENCE TO THE DOCUMENTS REQUIRED BY SECTION 718.503, FLORIDA STATUTES, TO BE FURNISHED BY A DEVELOPER TO A BUYER OR LESSEE. THE COMPLETE OFFERING TERMS ARE IN A FLORIDA PROSPECTUS AVAILABLE FROM THE DEVELOPER. New York: The Offering Plan for Olara Condominium has been filed with the New York State Department of Law, File No. CP22-0089. The Offering Plan is available from the Sponsor, New Jersey: This advertisement is a solicitation for the sale of units in Olara Condominium: N.J. Reg. No. 22-04-0012. Massachusetts: This Condominium has been registered with the Massachusetts Board of Registration of Real Estate Brokers and Salespersons: F-1277-01-01. California: WARNING: THE CALIFORNIA DEPARTMENT OF REAL ESTATE HAS NOT INSPECTED, EXAMINED, OR QUALIFIED THIS OFFERING. Equal Housing Opportunity